

REGULUS

na kwintet marszowy

Krystian Skubała

Bass Drum
Bęben basowy
lub Tom Tom
(o niskim brzmieniu)

A Allegro $\text{♩} = \text{ca. } 120 \text{ (110-120)}$ 4

B *ff*

B. D. *6*

C L. V. *p* *mp*

B. D. *9*

B. D. *12* *mf cresc.* *f*

B. D. *15*

B. D. *18* *più*

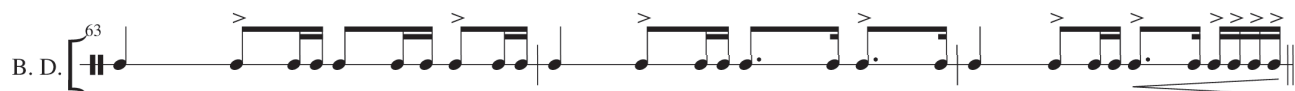
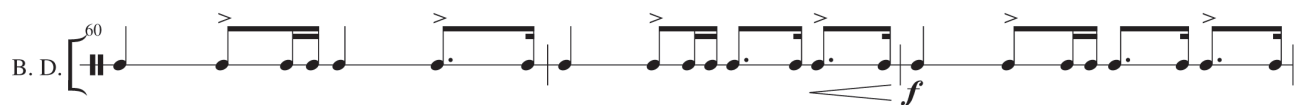
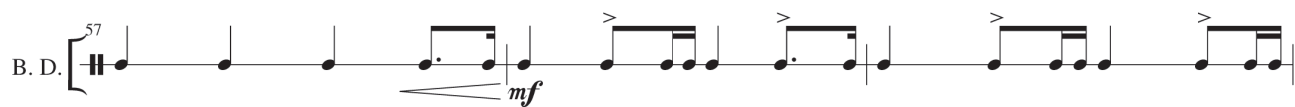
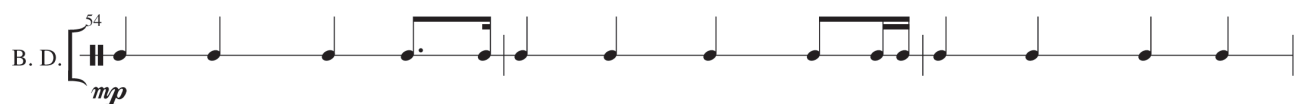
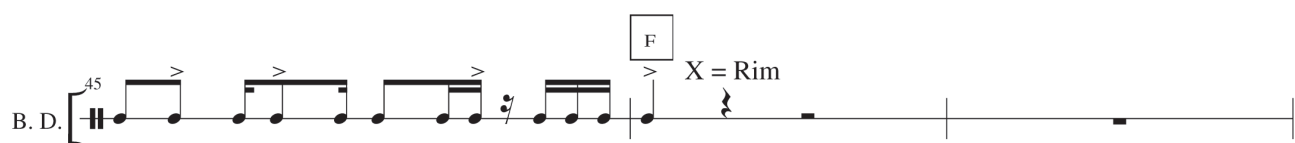
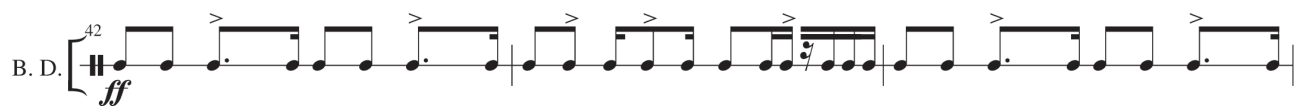
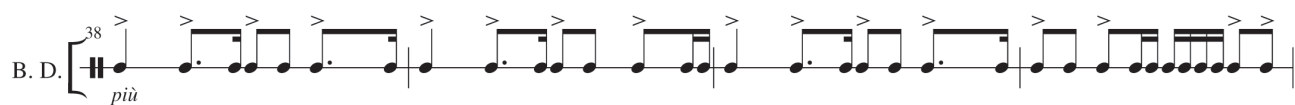
D

B. D. *21* *ff* *f*

E *ff* 6

B. D. *24*

B. D. *32* *f Deciso* *f*



G

B. D. $\left[\begin{array}{l} 66 \\ \text{ff} \end{array} \right]$

B. D. $\left[\begin{array}{l} 1. \\ 69 \end{array} \right]$

H

B. D. $\left[\begin{array}{l} 72 \\ 3 \end{array} \right]$

B. D. $\left[\begin{array}{l} 78 \\ \text{pp} \end{array} \right]$

I

B. D. $\left[\begin{array}{l} 81 \\ 1. \end{array} \right]$

B. D. $\left[\begin{array}{l} 84 \\ \text{f} \end{array} \right]$

J

B. D. $\left[\begin{array}{l} 1. \\ 87 \\ p \end{array} \right]$

B. D. $\left[\begin{array}{l} 90 \end{array} \right]$

K

B. D. $\left[\begin{array}{l} 93 \\ \text{f} \end{array} \right]$

L

B. D. $\left[\begin{array}{l} 1. \\ 96 \\ 4 \end{array} \right]$

M

B. D. $\left[\begin{array}{c} 102 \\ \text{ff} \end{array} \right.$ 

B. D. $\left[\begin{array}{c} 105 \\ p \end{array} \right.$ 

B. D. $\left[\begin{array}{c} 108 \\ mp \end{array} \right.$ 

B. D. $\left[\begin{array}{c} 111 \\ f \end{array} \right.$ 

B. D. $\left[\begin{array}{c} 114 \\ \text{più} \end{array} \right.$ 

B. D. $\left[\begin{array}{c} 117 \\ \end{array} \right.$ 

B. D. $\left[\begin{array}{c} 120 \\ \end{array} \right.$ 

2016